

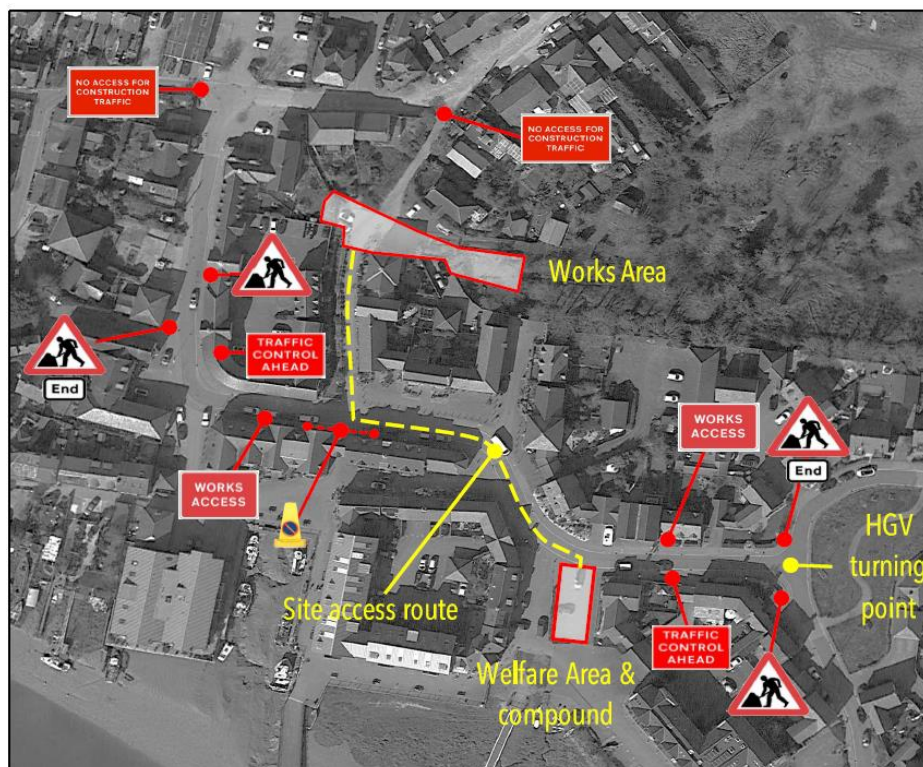
5th August 2024

Wivenhoe Flood Alleviation Scheme – Walter Radcliffe Road

Wivenhoe, Essex has been identified by Essex County Council (ECC) as a Critical Drainage Area (CDA), meaning that it is susceptible to flooding from surface water.

Essex County Council has been asked to deliver the upsizing of the existing culvert under Walter Radcliffe Road to increase capacity within the local drainage network and reduce the flood risk to local properties. On behalf of Essex County Council, I would like to sincerely apologise if you did not receive the initial letter, dated 5th July, which explained the upcoming works and use of the car park on Walter Radcliffe Road.

The below drawing confirms the site area, site compound location and the proposed traffic management signage that will be erected for the duration of the scheme.



As we are working on a classified main river, ECC will be delivering these works on behalf of the Environment Agency, but utilising our own contractors to ensure the works are completed as quickly as possible. The works began the w/c 15th July and are scheduled to last approximately 8 weeks, subject to external factors such as weather/ access to the site which is very constrained. I have spoken to the Site Supervisor who has said the works are currently on schedule so should be completed within the initial timeframe.

If you have any queries or concerns about the scheme, then please do not hesitate to contact us on floods@essex.gov.uk or speak to your local Councillors, Cllr Evans cllrglyn.evans@wivenhoe.gov.uk and Cllr Boughton cllrshaun.boughton@wivenhoe.gov.uk and we will get back to you.

Kind Regards,

Floods Team
Essex County Council

E: floods@essex.gov.uk